

ESCAPE THE ORDINARY



COOMBE ABBEY

no ordinary hotel

**STAY
DINE
MEET
DRINK
EXPLORE
DISCOVER
CELEBRATE
EXPERIENCE**

STAY

Our accommodation is certainly worthy of being 'no ordinary'. Coombe Abbey Hotel has 119 individually designed Bedchambers:

Crown, Feature and Grand Feature

Be charmed by our opulent yet warmly welcoming rooms. Drift off in a four poster bed and relax in a Victorian bath tub, then wake up refreshed in the beautiful Warwickshire countryside.

Enjoy a sumptuous, surprising and out of the ordinary stay in our choice of unique bedchambers, rich in furnishings, subtle lighting and special touches and with a choice of beautiful views across our historic courtyard, tree – lined drive or Parkland, lake and formal gardens.



DISCOVER OUR ROOMS



COOMBE ABBEY

no ordinary hotel



THE GRIFFIN

The Griffin is a grand room with wood panelled walls. It's the ideal setting for private meetings and cosy dinners.

- ▶ Reception area outside room
- ▶ Natural daylight
- ▶ Overlooks the West Terrace and formal gardens

Room set-up	No of delegates (max)
Boardroom	8
Dinner	8
Oval Meeting	8

Room Dimensions	Metres	Feet
Ceiling Height	2.8	9'2"
Length	8.10	26'6"
Width	3.15	10'3"

THE DE CAMVILLE

The De Camville is a superb room for board meetings or small conferences, with a dual aspect across the courtyard and the moat.

- ▶ Reception area outside room
- ▶ Natural daylight

Room set-up	No of delegates (max)
Boardroom	10
Buffet/Reception	20
Classroom	12
Dinner	10
Oval Meeting/Dinner	10
Theatre	20

Room Dimensions	Metres	Feet
Ceiling Height	4.28	14'
Length	7.6	25'
Width	3.45	12'



THE HARRINGTON

With a view across the moat, this room is ideal for larger boardroom meetings, small presentations and elegant private dinners.

- ▶ Reception area outside room
- ▶ Natural daylight
- ▶ Overlooks the moat

Room set-up	No of delegates (max)
Boardroom	16
Buffet/Reception	30
Classroom	14
Dinner	16
Theatre	30
U shape	10

Room Dimensions	Metres	Feet
Ceiling Height	2.7	9'
Length	6.72	22'
Width	6.72	22'



THE KELLWAY

Presented as a library, The Kellway is a splendid setting for intimate business meetings and cosy dinners.

- ▶ Reception area outside room
- ▶ Natural daylight
- ▶ Perfect for private dining
- ▶ Dual aspect across the moat and West Terrace

Room Layout	Delegates (max)
Boardroom	16
Classroom	16
Dinner	16
Theatre	30

Room Dimensions	Metres	Feet
Ceiling Height	2.7	8'8"
Length	7.3	23'9"
Width	5.4	17'7"





THE STUART

The Stuart is a versatile venue, flexible enough to accommodate larger meetings and events, whilst still maintaining an intimate feel.



ORNATE CEILING
WITH CHANDELIER



NATURAL
DAYLIGHT



PERFECT FOR SEMINARS
AND PRIVATE DINING



OVERLOOKING THE
WEST TERRACE AND
FORMAL GARDENS

<i>Room Layout</i>	<i>Delegates (max)</i>	<i>Room Layout</i>	<i>Delegates (max)</i>	<i>Room Dimensions</i>	<i>Metres</i>	<i>Feet</i>
Boardroom	30	Oval Meeting/Dinner	32	Ceiling Height	4.58	15'
Buffet/Reception	60	Theatre	50	Length	10.5	34'5"
Classroom	24	U-shape	25	Width	5.6	18'4"
Dinner	40					

THE WALNUT

Taking its name from the floor to ceiling antique walnut panelling, The Walnut is a prestigious venue for any event.

WALNUT PANELLED WALLS

Room Layout	Delegates (max)
Boardroom	24
Buffet/Reception	40
Classroom	14

ORNATE FIREPLACE

Room Layout	Delegates (max)
Oval Meeting/Dinner	24
Theatre	30

PERFECT FOR BUSINESS MEETINGS AND PRIVATE DINING

OVERLOOKING THE WEST TERRACE AND FORMAL GARDENS

Room Dimensions	Metres	Feet
Ceiling Height	4.58	15'
Length	6.8	22'
	(10.5*)	(34'4"*)
Width	6.6	21'6"

*Up to storage area



THE CLOISTERS

With its stunning architecture, The Cloisters is a stylish venue for any event.



LARGE WINDOWS
LET IN PLENTY OF
NATURAL DAYLIGHT



IMPRESSIVE
FIREPLACE



ADJOINING PRIVATE
FUNCTION BAR AND
CONSERVATORY



IDEAL FOR DAY
CONFERENCES AND
CORPORATE DINNERS

<i>Room Layout</i>	<i>Delegates (max)</i>	<i>Room Layout</i>	<i>Delegates (max)</i>	<i>Room Dimensions</i>	<i>Metres</i>	<i>Feet</i>
Boardroom	40	Dinner	80	Ceiling Height	4.58	15'
Buffet/Reception	120	Dinner Dance	80	Length	14.5	46'6"
Cabaret	56	Theatre	120	Width	8.2	26'9"
Classroom	40	U-shape	46			

THE HIGH COURT

The Courthouse's upper floor, also known as the High Court, makes a unique setting for daytime meetings and evening functions alike.

RESTORED TENNIS CLUBHOUSE SETTING

<i>Room Layout</i>	<i>Delegates (max)</i>
Boardroom	50
Buffet/Reception	180
Cabaret	56
Classroom	60

PRIVATE BAR

<i>Room Layout</i>	<i>Delegates (max)</i>
Dinner	100
Dinner Dance	100
Theatre	120
U-shape	50

SEPARATE RECEPTION LOUNGE AREA DOWNSTAIRS**

<i>Room Layout</i>	<i>Delegates (max)</i>
Dinner	100
Dinner Dance	100
Theatre	120
U-shape	50

SITUATED ON THE FIRST FLOOR

<i>Room Dimensions</i>	<i>Metres</i>	<i>Feet</i>
Ceiling Height	2.7	8'10"
Length	14.25	46'9"
Width	14.75	48'4"



THE CENTRE COURT

A regal setting in a restored tennis clubhouse dating back to 1817, this room includes its own separate bar and lounge.


**RESTORED
TENNIS CLUBHOUSE
SETTING**

Room Layout

Boardroom

Buffet/Reception

Cabaret

Classroom


Delegates (max)

50

180

56

60


**LOUNGE/BAR
AREA OUTSIDE
ROOM**

Room Layout

Dinner

Dinner Dance

Theatre

U-shape


**INTEGRATED LCD
PROJECTOR & SCREEN**

Delegates (max)

80

80

120

45


**SITUATED ON THE
GROUND FLOOR**

Room Dimensions

Ceiling Height

Length

Width

Metres

2.6

14.2

11.75

Feet

8'6"

46'6"

38'6"

THE ABBEYGATE

The Abbeygate's mediaeval banqueting hall and drinking chamber provide a unique venue for a range of events.



**ADJOINING
PRIVATE
FUNCTION BAR**



**MEDIAEVAL
THEME**



**IDEAL FOR DAY
CONFERENCES AND
EVENING DINNERS**



**SELF-CONTAINED
BUILDING SEPARATE
FROM THE ABBEY**

Room Layout
Banquet
Dinner
Theatre

Delegates (max)
160
60
146

Room Dimensions
Ceiling Height
Length
Width

Metres
3.0
10.0
16.5


Feet
10'
32'
54'





THE MARQUEE

Set on The East Terrace, our magnificent Marquee is the perfect venue for larger conferences, exhibitions & celebrations.


**ACCOMMODATES
UP TO
500 GUESTS**


**PRIVATE BAR
AND
RESTROOMS**


**IDEAL FOR LARGE
CONFERENCES, DINNERS
AND PARTIES**


**LARGE DANCEFLOOR
WITH STARCLOTH
ABOVE**

Room Layout
Theatre
Rounds

Delegates (max)
400
500

Room Dimensions
Ceiling Height
Length
Width

Metres
3m
45m
15m

Feet
9ft 10in
147ft 7in
49ft 2in

EAT & DRINK

Dining at Coombe Abbey is a feast for all the senses whatever the occasion. Subtle lighting, lavish furnishings, unobtrusive yet attentive service makes dining at Coombe truly memorable.

Our elegant Garden Room Restaurant serves classic dishes with locally sourced ingredients. Have a meal to remember, from delicate afternoon teas to romantic evening meals. Or, celebrate your special occasions with our private dining experiences.

Our private dining rooms can accommodate 10 to 140 guests, allowing you to host your own party in a candlelit suite. We also offer an event planner service to make your experience here all the more memorable.



EXPERIENCE

There is always something new to experience at Coombe Abbey. Host to a variety of exciting events, every visit makes for a completely unique experience.

Fun, feasting, drinking, laughter and song await you at our Mediaeval Banquet whilst at the Murder Mystery Evening you are invited to bear witness to a murder and investigate whodunnit?

Delight in our annual events such as our Gunpowder Gala on Bonfire weekend and discover how the Abbey was involved in Guy Fawkes' Gunpowder plot. Or, decide if Coombe Abbey is haunted or simply historic at our Halloween Banquet.

The history, charm and ambience of Coombe Abbey makes every visit one to remember.



MEET AND CELEBRATE



COOMBE ABBEY

no ordinary hotel

CONFERENCES AND MEETINGS

Coombe Abbey Hotel provides the perfect setting for conference planners looking to impress and inspire. Home to several elegant meeting rooms, unique hotel accommodation and a restaurant, Coombe Abbey Hotel can accommodate residential and day conferences as well as host evening events.

Originally a Cistercian Abbey dating back to the 12th Century, Coombe Abbey Hotel stands in 500 acres of parkland.

Surrounded by a moat and overlooking formal gardens and lake designed by the renowned 18th Century landscape architect 'Capability Brown' it is a breathtaking backdrop that will not fail to impress. The estate incorporates a designated event field and Mediaeval Banqueting Hall - perfect for team building and entertaining your guests.

Situated in an accessible location, found off major road, rail and air links, Coombe Abbey Hotel offers an escape from the city in a peaceful, inspirational setting - just the place to stimulate, motivate and then relax at the end of a successful day.

Our dedicated Conference Team will help you to plan and co-ordinate your event and advise you on the most suitable rooms and set-ups at Coombe Abbey Hotel.

If you require further details and help in organising your next event, or would like a tour of the facilities, please call our Conference Team on +44 (0) 2476 450 450.

ROOM CAPACITIES

Rooms	Ground Floor	First Floor	Room Facilities				Maximum number of delegates:							Dimensions
			Natural daylight	Wheelchair access	Lift access	Bar inside room or near room	Boardroom/Oval	Theatre	U shape	Classroom	Cabaret	Rounds	Buffet/Reception	
Abbeygate	*		*	*		*	45	140	30		56	90	180	10.00m x 16.50m x H 3.00m
High Court		*	*	*	*	*	50	120	50	60	80	120	180	14.25m x 14.75m x H 2.70m
Centre Court	*			*		*	50	120	45	60	56	80	180	14.20m x 11.75m x H 2.60m
Cloisters	*		*	*		*	40	120	46	40	64	80	120	14.50m x 8.20m x H 4.58m
Stuart	*		*	*		*	30	60	25	24	32	40	60	10.50m x 5.60m x H 4.58m
Walnut	*		*	*			24	30		14	24	30	40	6.80m x 6.60m x H 4.58m
Harrington	*		*	*			16	40	10	14		20	30	6.72m x 6.72m x H 2.70m
Kellway	*		*	*			16	30		16			25	7.30m x 5.40m x H 2.70m
De Camville	*		*	*			10	20		12		10	20	7.60m x 3.45m x H 4.28m
Griffin	*		*	*			8					8		8.10m x 3.15m x H 2.80m
Marquee	*		*	*		*		450				350		15.00m x 40.00m x H 3.00m

CONFERENCE PACKAGES

Choose from our set Conference Packages or tailor your own package to suit your individual needs. If there is something that you require and it is not listed here, please ask and we will try wherever possible, to provide it for you.

DAY CONFERENCE PACKAGE

This package is suitable for all meetings for ten or more delegates. The package includes:

- *Unlimited tea & coffee throughout the day*
- *Mid-morning snacks*
- *Lunch with tea & coffee*
- *Mid-afternoon refreshments*
- *Meeting room hire*
- *Notepaper & pencils*
- *Bottled mineral water & sweets*
- *LCD & screen*
- *Flip chart & pens*
- *Unlimited complimentary internet access*

24 HOUR CONFERENCE PACKAGE (INCLUDING OVERNIGHT STAY)

This package is suitable for all conferences with accommodation for ten or more delegates. The package includes the all of the above plus:

- *Three course dinner with coffee*
- *Accommodation in a Crown Bedchamber*
- *Full English breakfast*

TAILORED CONFERENCE PACKAGE

Design your own package by combining room hire with any of the options listed in the packages above and from our additional extras.

ADDITIONAL EXTRAS

- **Outdoor Activities** - *A host of activities can be arranged in the majestic surroundings of our 500 acres of parkland including Archery, Axe Throwing, Treasure Hunts, Falconry & Mediaeval Pageants to name a few (supplements for ground hire may be applicable).*
- **Special Events** - *For something completely different arrange an award winning Mediaeval Banquet in our unique Baronial Hall armed with a dagger & bib. Or try a Murder Mystery or another themed event filled with delicious food, live entertainment, laughter and fun.*

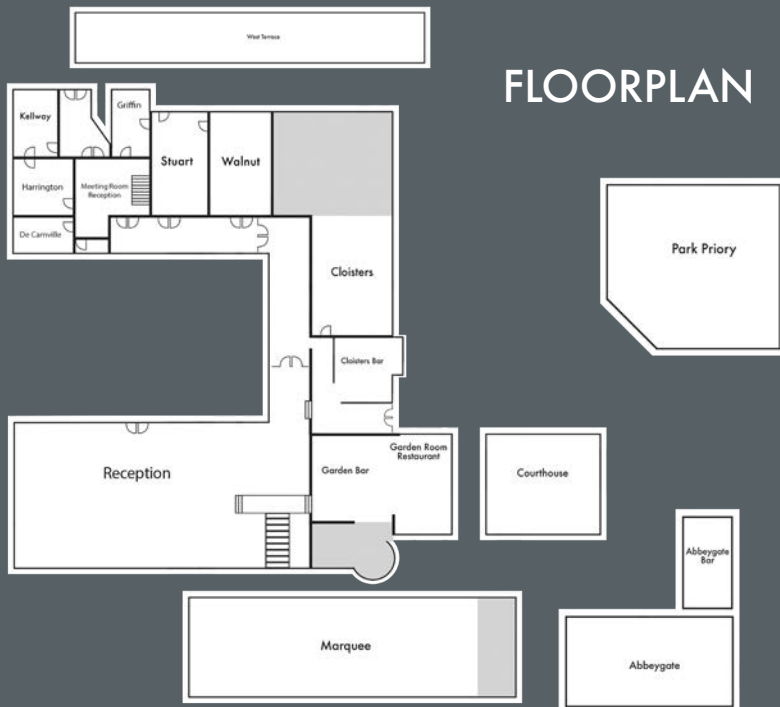
PRIVATE DINING

Dining at Coombe Abbey Hotel is a special experience. Whether you are planning on hosting a dinner or dinner dance for a large number of guests or an intimate dinner for a smaller group, we have a selection of unique rooms for you to choose from.

Our private dining rooms can accommodate between 10 to 450 guests. We also offer an event planner service, which is bound to make your experience here all the more memorable.

WHY DINE AT COOMBE ABBEY?

- 11 unique rooms to choose from
- Dedicated Function Manager
- Dedicated Pre-Event Planner
- Delightful menus
- Celebration packages available
- Range of great suppliers to make your experience all the more memorable.





DISCOVER

Coombe Abbey Hotel stands proudly within 500 acres of parkland. Much of the splendour of its original state can be admired and parts of the Cistercian Abbey are impressively restored to their former glory.

The Abbey of Cumbe, as it was known in the 12th Century, was the largest and most powerful monastery in Warwickshire. The majority of the land was used for sheep farming and growing crops of cereals. The Abbey remained in the hands of the Monks until the dissolution of the Monasteries in 1539, whereby the land was appropriated by King Henry VIII. The construction of the stone built Cloisters in 1509, shortly before the dissolution can still be seen today.

The estate changed hands several times and was acquired by John Harrington in the year 1581. Many parts of the original Abbey were incorporated into the building of his new house.

In 1603 Princess Elizabeth, daughter of James I, came to live and be educated at Coombe Abbey. In 1605, Guy Fawkes' famous gunpowder plot failed. His plan had been to kidnap Princess Elizabeth from Coombe Abbey and put her on the throne following the assassination of her father.

In 1622 The Craven Family purchased Coombe Abbey and it remained with them for 300 years. Throughout their time at the Abbey, various additional buildings were added, such as the West Wing in 1677.

The Craven Family employed Lancelot ‘Capability’ Brown in 1771 to re-design the gardens and surrounding land at Coombe. By damming the Smite Brook, he created the Main Lake and Top Pool. His work can be seen to this day, remaining little unchanged over two centuries.

In 1849 William Eden Nesfield was employed to make alterations in the house in “Gothic Revival” style. The East Wing and part of the North Wing were demolished and rebuilt in this new style.



Following the tragic death of Lord Craven in 1921, the Countess reluctantly made the decision to sell the estates and in 1923 the house and grounds were bought by a builder named John Gray.

Coventry City Council purchased Coombe Abbey in 1964 along with its estate of 150 acres. A series of vital restoration work followed and in 1966 the Regional Park was opened to the public.

1992 saw the development to restore Coombe Abbey into “no ordinary hotel” and on 17th February 1995 Coombe Abbey Hotel was officially opened.



VISIT

Coombe Abbey Hotel is set in the tranquil Warwickshire countryside. With 500 acres of parkland, formal gardens and a peaceful lake, you can explore the outdoors and then retire to our restaurant, bar or relax back in your bedchamber.

We're within easy reach of key M1 and M6 motorways and transport links, as well as being just a short distance from Birmingham, Warwick, and Stratford Upon Avon.

Experience a touch of something different, with candlelit corridors, mediaeval entertainment, four poster beds, individually designed bedchambers, and more. With 119 rooms and wedding, conference and banqueting facilities, you can stay with us for a relaxing weekend away or celebrate the most special of occasions.



Coombe Abbey Hotel Brinklow Road Binley Warwickshire CV3 2AB
T: +44 (0) 2476 450 450 reservations@coombeabbey.com www.coombeabbey.com